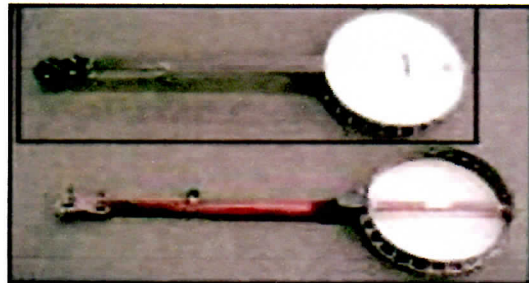




Junior
Appalachian
Musicians®
Alexander

Old Time Clawhammer Banjo

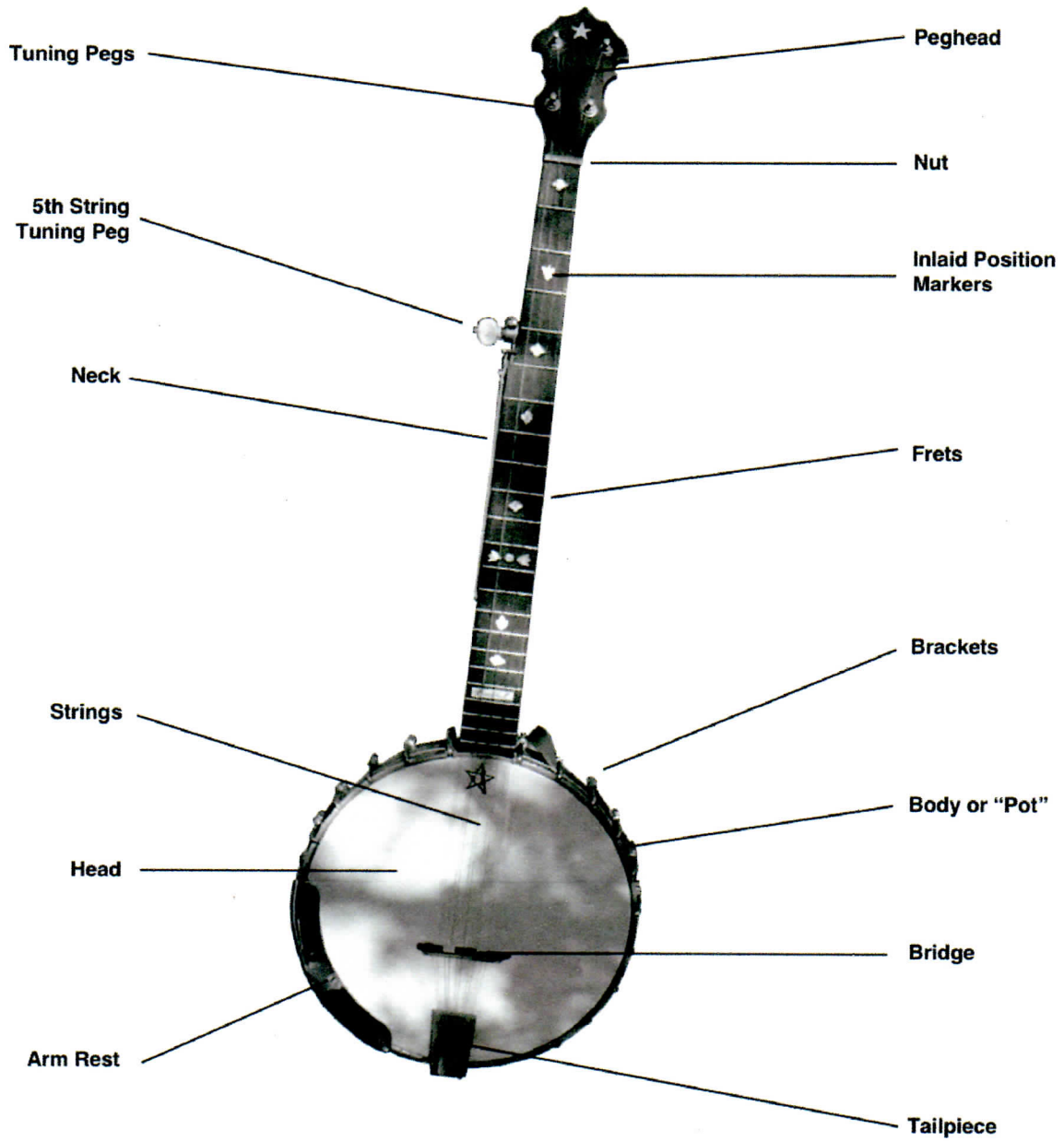


Hiddenite Arts & Heritage Center

Instructor Veda Bafford

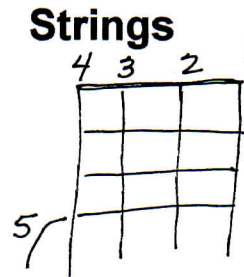
© 2016

Parts of a Clawhammer Banjo



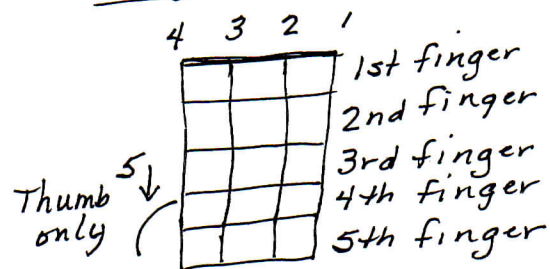
How to Read Banjo Tab - Licks

- 1 = 1st string played open (no fingers on)
- 2 = 2nd string played open (no fingers on)
- 3 = 3rd string played open (no fingers on)
- 4 = 4th string played open (no fingers on)
- 5 = 5th string played open (no fingers on)



- 1⁵ = 1st string, 5th fret held down
- 3² = 3rd string, 2nd fret held down
- Etc. Same for other strings/frets

Fingerings - 1st Position



DT=

- 1st string – Index finger
- 2nd string – Thumb
- 1st string – Index finger
- 5th string – Thumb

½ DT=

- 1st string – Index finger
- 2nd string – Thumb

C DT = Drop thumb holding down a C chord

D⁷ DT = Drop thumb holding down a D chord

FOLLOWING LICKS WORK FOR ALL STRINGS:

Slide =

Slide 2²⁻³ - 1 - 5

2nd finger on 2nd string in 2nd Fret ---
then slide 2nd finger into 3rd fret on 2nd string

Roll =

3²⁻⁴ = 3rd string holding down 2nd fret with 2nd (alter fingering – 1st)
finger then putting down 4th (alter fingering 3rd) finger on 4th fret

P O = Pull Off

PO 3² - 1 - 5 = 2nd finger on 2nd fret on 3rd string – pull string with
2nd finger while lifting finger off string

H O = Hammer On

HO 4² - 1 - 5 = Pluck open 4th string then slap 2nd finger down on 2nd
fret of 4th string

Basic Clawhammer Banjo Lick

Basic Lick

Rhythm = Long – Short – Short

Strings 1 – 4 are hit with the 1st finger only – downward hit with finger nail only

String 5 is only hit with the thumb

Use 1st finger on right hand strumming down on 1st 2 numbers for each lick using finger nail

3rd number in lick is always with the thumb

1 – 1 – 5

2 – 1 – 5

3 – 1 – 5

4 – 1 – 5

2 – 2 – 5

3 – 2 – 5

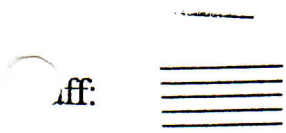
4 – 2 – 5

3 – 3 – 5

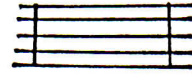
4 – 3 – 5

See advanced Licks on How to read banjo tab page.

HOW TO READ MUSIC BASICS



Measure or Bar



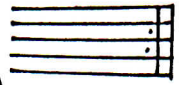
Treble clef:



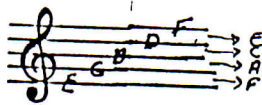
Bass clef:



Repeat dots:
(Go to beginning
and repeat)

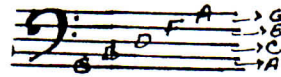


Treble clef notes:



Lines: Every Good
Boy Does Fine
(Bottom to Top)
Spaces: FACE

Bass clef notes:



Lines: Good Boys
Do Fine Always
Spaces: ACEG

Time Signatures:

4 = 4 beats (counts) / measure
4 = Quarter note (1/4) gets 1 beat

2 = 2 beats / measure
4 = Quarter note (1/4) gets 1 beat

3 = 3 beats / measure
4 = Quarter note (1/4) gets 1 beat

(—) = (top number
tells no. of
beats)
= (bottom number
tells which note
gets one beat)

Notes:

Quarter note:

Half Note:

Whole note:

Eighth note:

Sixteenth note:

Thirty second note:

Rests:

Quarter rest:

Half rest:

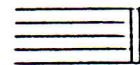
Whole rest:

Eighth note:

Sixteenth note:

Thirty second note:

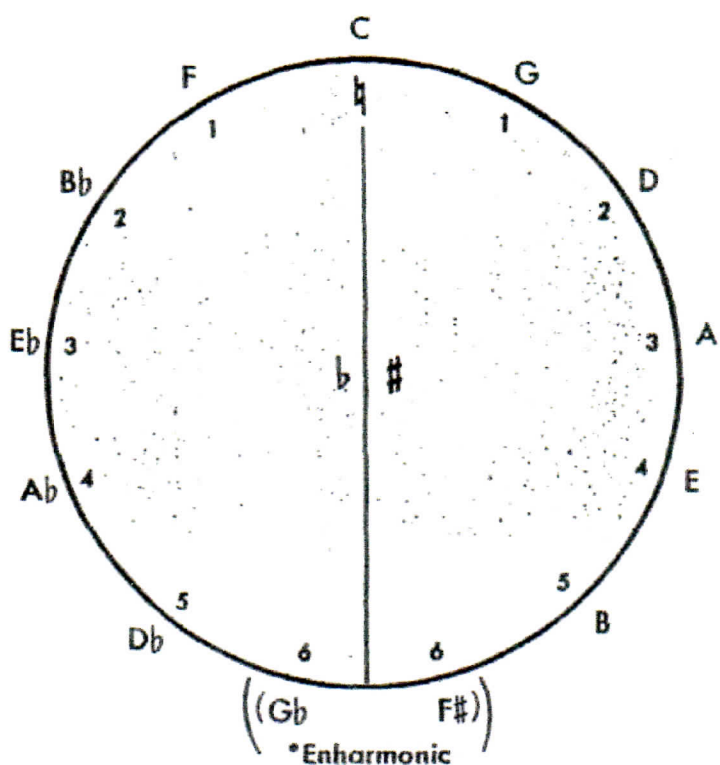
End of Song:



Major Key Signatures

C		No sharps or flats
G		One sharp F#
D		Two sharps F#-C#
A		Three sharps F#-C#-G#
E		Four sharps F#-C#-G#-D#
B		Five sharps F#-C#-G#-D#-A#
F#		Six sharps F#-C#-G#-D#-A#-E#
F		One flat Bb
Bb		Two flats Bb-Eb
Eb		Three flats Bb-Eb-Ab
Ab		Four flats Bb-Eb-Ab-Db
Db		Five flats Bb-Eb-Ab-Db-Gb
Gb		Six flats Bb-Eb-Ab-Db-Gb-Cb

The Cycle of Keys



Going around the circle clockwise will take us through the **Dominant keys**.

Going around the circle counter-clockwise will take us through the **Sub Dominant keys**.

*Enharmonic: Written differently as to notation but sounding the same.

The Major and Relative Minor Keys

	C	Am		
F	Dm	F#	D#m	
Bb	Gm	B	G#m	
Eb	Cm	E	C#m	
Ab	Fm	A	F#m	
Db	Bbm	D	Bm	
Gb	Ebm	G	Em	



* *capo* BANJO CHORDS (Bluegrass G Tuning) G'DGBD

C (D) F (G) G (A) E (F#) A (B) D (E) B^b (C) B (C#) G7 (A7) D7 (E7)

B7 (C#7) E7 (F#7) A7 (B7) C#7 (D#7) F#7 (G#7) Dm (Em) Am (Bm) Em (F#m) Bm (Cm) C#m (D#m)



() when using *capo*

Banjo Chords - Double C tuning G'CGCD

C (D) G (A) G (A) F (G) F (G) Am (Bm) A (B) D (C) Dm (Cm)

Banjo Chords - G Modal tuning G'DGCCD

G modal F

Banjo

Bile Em Cabbage Down Mtn Ver G tuning - Played in A (capo 2)

1st or A Part

Slide 2²⁻³ - 1 - 5

DT 1 - 2 - 1 - 5

Slide 2²⁻³ - 1 - 5

DT 1 - 2 - 1 - 5

Slide 2²⁻³ - 1 - 5

DT 1 - 2 - 1 - 5

2X D⁷ 3 - 1 - 5

2X 2 - 1 - 5

2X C 2 - 1 - 5

DT 1 - 2 - 1 - 5

D⁷ 3 - 1 - 5

2X 3 - 1 - 5

Repeat A Part

2nd or B Part

2X 2 - 1 - 5

2X C 2 - 1 - 5

2X 2 - 1 - 5

2X D⁷ 3 - 1 - 5

2X 2 - 1 - 5

2X C 2 - 1 - 5

DT 1 - 2 - 1 - 5

D⁷ 3 - 1 - 5

2X 3 - 1 - 5

REPEAT B part

DT=

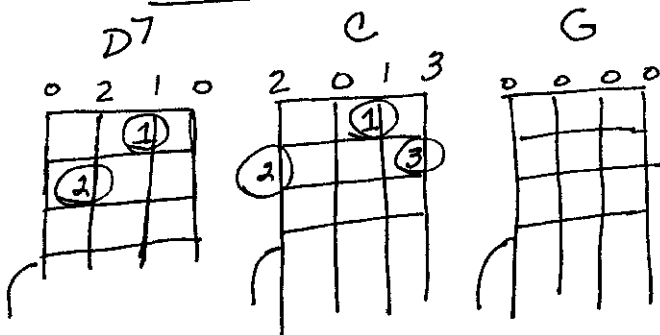
1st string - Index finger

2nd string - Thumb

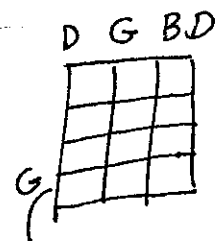
1st string - Index finger

5th string - Thumb

Chords



G tuning



Slide =

2nd finger in 2nd fret
on string 2 -

Slide 2nd finger to 3rd fret

Banjo

Cripple Creek G tuning - Played in A (capo 2)

1st or A Part

1⁵ - 1⁵ - 5

DT

C DT

1 - 1 - 5

1⁵ - 1⁵ - 5

DT

D⁷ 3 - 1 - 5

3 - 1 - 5

1⁵ - 1⁵ - 5

DT

CDT

1 - 1 - 5

Roll 3²⁻⁴ - 1 - 5

PO 3² - 1 - 5

HO 4² - 1 - 5

3 - 1 - 5

2nd or B Part

Roll 3²⁻⁴ - 1 - 5

PO 3² - 1 - 5

Roll 3²⁻⁴ - 1 - 5

3 - 1 - 5

Roll 3²⁻⁴ - 1 - 5

PO 3² - 1 - 5

HO 4² - 1 - 5

3 - 1 - 5

REPEAT B part

DT=

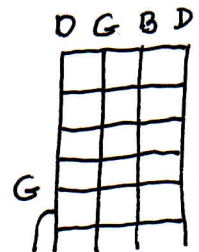
1st string - Index finger

2nd string - Thumb

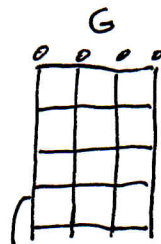
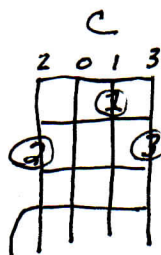
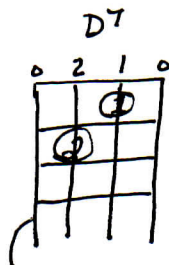
1st string - Index finger

5th string - Thumb

G tuning



Chords



Banjo

Shortnin' Bread G tuning - Played in A (capo 2)

1st or A Part

1⁵ - 1 - 5

DT 1² - 2 - 1 - 5

1⁵ - 1 - 5

DT 1² - 2 - 1 - 5

1⁵ - 1 - 5

DT 1² - 2 - 1 - 5

D⁷ 3 - 1 - 5

3 - 1 - 5

REPEAT A part

2nd or B Part

3 - 1² - 5

DT

2X Roll 3²⁻⁴ - 1 - 5

3 - 1² - 5

DT

D⁷ 3 - 1 - 5

3 - 1 - 5

REPEAT B part

